

Gŵyl Agor
Drysau

Opening
Doors
Festival



2024

12-16 Mawrth

12-16 March

Gŵyl theatr ryngwladol Cymru
ar gyfer cynulleidfaoedd ifanc

Wales' International theatre festival
for young audiences



Gŵyl Agor Drysau yw gŵyl theatr ryngwladol Cymru ar gyfer cynulleidfaoedd ifanc. Nod yr ŵyl yw rhoi'r cyfle i blant, pobl ifanc a theuluoedd yng Nghymru weld rhai o gynyrchiadau theatr gorau'r byd, a rhoi'r cyfle i raglenwyr a chynhyrchwyr rhyngwladol brofi cyfoeth celfyddydau perfformio Cymru. Mae hefyd yn darparu gofod ar gyfer deialog ac yn annog cydweithio a rhannu syniadau. Cynhelir perfformiadau, gweithdai a sgysiau yn nhref Aberystwyth, sef cartref yr ŵyl, ac mewn theatrau eraill yng Nghymru.

Opening Doors Festival is Wales' international theatre festival for young audiences. The festival aims to give children, young people and families in Wales the chance to see some of the world's best theatre productions as well as giving international programmers and producers the chance to experience the richness of Wales' performing arts. It also provides a space for dialogue and encourages collaboration and sharing of ideas. Performances, workshops and talks take place in the town of Aberystwyth, the home of the festival, and in other theatres in Wales.



Cwmni Theatr Arad Goch yw trefnydd *Gŵyl Agor Drysau*. Wedi'i leoli yn Aberystwyth, mae'r cwmni yn darparu theatr o'r safon uchaf, yn bennaf ar gyfer plant a phobl ifanc.

Cwmni Theatr Arad Goch is the organiser of *Opening Doors Festival*. Based in Aberystwyth, the company provides high-quality theatre, mainly for children and young people.

Cwmni Theatr Arad Goch
Stryd y Baddon
Aberystwyth
Ceredigion
SY23 2NN



@aradgoch

www.aradgoch.cymru

01970 617 998

Rhif Elusen: 702506

CYNNWYS CONTENTS



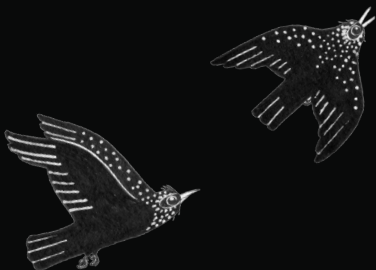
Croeso gan Gyfarwyddwr yr Ŵyl	
A Welcome from the Festival Director	4-5
Neges o Gefnogaeth A Message of Support	6
Map o Aberystwyth Map of Aberystwyth	7
Rhaglen Programme	8-11
Cydnabyddiaethau Acknowledgements	12-13
Lleoliadau Venues	14-17
Datganiad Hinsawdd Climate Statement	18
Ble mae'r Dail yn Hedfan	
Where the Leaves Blow	20
Breaking Illusions + Minlliw + Palmant / Pridd	21
Ceffyl y Sêr	22
Gig Agor Drysau	23
Invisible Lands	24
LOVNI	25
Meet Fred	26
Meltdown	27
Owl at Home	28
Pwy Fyddi Di? Who Will You Be?	29
QWERIN	30
Remarkable Rhythm	31
Rheolydd // Controller	32-33
SyrCAS CImera	34
The Diary of an Ugly Duckling	35
The Rematch	36
We Touch, We Play, We Dance	37
When the Moon Spun Round	38
Yr Hogyn Pren	39
Trafodaethau Discussions	40-41

CROESO GAN GYFARWYDDWR YR WŶYL A WELCOME FROM THE FESTIVAL DIRECTOR

Dyma'r degfed tro i ni gynnal Gŵyl Agor Drysau ac ar ôl i Covid19 rwystro cynifer o weithgareddau, mae'n hyfryd gallu croesawu artistiaid theatr rhyngwladol i Gymru, ac i Aberystwyth unwaith eto. Yn ystod y degawdau diwethaf mae Cwmni Theatr Arad Goch wedi perfformio ar draws y byd - o Seoul, De Corea yn y Dwyrain i Seattle yn yr UDA yn y Gorllewin. Mae cydweithio creadigol yn bwysig iawn i Gwmni Theatr Arad Goch a dyma gyfle nawr i ni Agor Drysau a gwahodd ein cydweithwyr atom ni yng Nghymru - yn artistiaid, cwmnïau perfformio, awduron, cynhyrchwyr, a rhaglenwyr gwyliau yn ogystal â mudiadau lleol, cenedlaethol a rhyngwladol. Croeso mawr!

Wrth galon ein gwaith mae plant a phobl ifanc - eu bywydau, dychymyg, breuddwydion, ofnau, profiadau, emosiynau, dyheadau a hunaniaeth - ac mae theatr yn bwydo pob un o'r pethau hyn. Wrth ddod at ein gilydd mewn gŵyl fel hon rydyn ni'n edrych ymlaen at weld a chlywed mwy am waith a gweithgareddau sawl gwlad. Diolch yn fawr i bawb sydd wedi cyfrannu at yr ŵyl: yr artistiaid, trefnyddion, yr holl arianwyr, busnesau, gwirfoddolwyr, athrawon, ein cydweithwyr mewn theatrau eraill, yn enwedig Canolfan y Celfyddydau Aberystwyth, staff yr ŵyl a'r cwmni ac, wrth gwrs, i'n cynulleidfaoedd. Croeso i Gwmni Theatr Arad Goch, i'r ŵyl ac i Gymru: dewch yn ôl atom cyn bo hir!

Jeremy Turner
Cyfarwyddwr yr Ŵyl
Cwmni Theatr Arad Goch



This is the tenth time we have hosted *Opening Doors Festival* and after Covid19 hampered so many activities, it's wonderful to be able to welcome international theatre artists to Wales, and to Aberystwyth once again. In recent decades Cwmni Theatr Arad Goch has performed in many countries - from Seoul, South Korea in the East to Seattle in the US in the West. Creative collaboration is very important to us and this is now a wonderful opportunity for us to Open Doors and invite our colleagues to Wales - artists, performance companies, writers, producers, and festival programmers as well as local, national and international organisations. A big welcome!

At the heart of our work are children and young people - their lives, imagination, dreams, fears, experiences, emotions, aspirations, and identities - and theatre nourishes all these things. Coming together at a festival like this we look forward to seeing and hearing more about the work and activities of many countries. Many thanks to everyone who has contributed to the festival: the artists, organisers, all the funders, businesses, volunteers, teachers, our colleagues in other theatres, especially Aberystwyth Arts Centre, festival and company staff and, of course, to our audiences. Welcome to Cwmni Theatr Arad Goch, to the festival and to Wales: come back to see us soon!

Jeremy Turner
Festival Director
Cwmni Theatr Arad Goch



NEGES O GEFNOGAETH A MESSAGE OF SUPPORT

Dymunaf ddarparu neges o gefnogaeth i stori barhaus *Gŵyl Agor Drysau | Opening Doors Festival* yn 2024. Rwy'n cydnabod rôl bwysig y celfyddydau a diwylliant i wella lles ein cymunedau a'n pobl, ac mae'n wych gweld gŵyl sy'n dathlu theatr pobl ifanc yng Nghymru a'i gysylltiad gyda theatr pobl ifanc ar draws y byd. Rwy'n falch o weld, yn ystod cyfnod o wrthdaro ac anghydweld, bod y digwyddiad hwn yn denu cyfranogwyr o'r Eidal, Iwerddon, Gwlad Belg, Y Ffindir ac Awstralia. Gall y digwyddiad arddangos i weddill y byd bod y celfyddydau yn rym positif sy'n chwalu ffiniau ac yn uno pobl o gefndiroedd gwahanol er budd cymdeithas. Mae *Gŵyl Agor Drysau | Opening Doors Festival* yn canolbwyntio'n arbennig ar roi cyfle i bobl ifanc ddod o hyd i'w llais a'u hunaniaeth, felly rwy'n gobeithio bydd yr holl gyfranogwyr yn elwa'n enfawr o'r digwyddiad hwn, nawr ac yn y dyfodol.

Dawn Bowden AS

**Dirprwy Weinidog y Celfyddydau, Chwaraeon a Thwristiaeth
Llywodraeth Cymru**

I'd like to provide a message of support for the continuing story of *Gŵyl Agor Drysau | Opening Doors Festival* for 2024. I recognise the important role that arts and culture play in the wellbeing of our communities and people and it is brilliant to see a festival that celebrates young people's theatre in Wales and its connection with young people's theatre across the globe. I'm pleased to see that at a time of apparent division, this event has drawn participants from as far afield as Italy, Republic of Ireland, Belgium, Finland and Australia. This event can send a strong message to the rest of the world that the arts are a positive force that break down barriers and unites people from different backgrounds for the benefit of society. *Gŵyl Agor Drysau | Opening Doors Festival* is particularly focused on young people finding their own voice and identity, so I hope all participants find this event of enormous benefit, now and in the future.

Dawn Bowden MS

**Deputy Minister for Arts, Sport and Tourism
Welsh Government**



MAP O ABERYSTWYTH

MAP OF ABERYSTWYTH



ALLWEDD KEY

- 1. Theatr Arad Goch
- 2. Bandstand
- 3. Llyfrgell Genedlaethol Cymru National Library of Wales
- 4. Canolfan y Celfyddydau, Aberystwyth
Aberystwyth Arts Centre
- 5. Gorsaf drenau a bysus Train and bus station
- 6. Stiwdio Ffowndri Foundry Studio



RHAGLEN PROGRAMME

DYDD MAWRTH TUESDAY 12/3

Yr Hogyn Pren Bandstand	9:30
The Rematch Theatr Felinfach	10:15*
Owl at Home Theatr Arad Goch	10:15*
Meltdown Ysgol/School	10:15
LOVNI Stiwdio/Studio, CCA/AAC	10:15*
Rheolydd // Controller Bandstand	11:30
Yr Hogyn Pren Bandstand	12:30
Owl at Home Theatr Arad Goch	13:15*
Meltdown Ysgol/School	13:15
LOVNI Stiwdio/Studio, CCA/AAC	13:15*
Trafodaeth/Discussion <i>Dyfeisio: Ble i ddechrau?/Devising: Where to start?</i> Theatr Arad Goch	14:45
Rheolydd // Controller Bandstand	16:15
Rheolydd // Controller Bandstand	17:45
Meet Fred Theatr Arad Goch	19:30*



DYDD MERCHER WEDNESDAY 13/3

SyrCAS CimerA CCA/AAC	~
Yr Hogyn Pren Ysgol/School	9:30
The Rematch Neuadd Fawr/Great Hall, CCA/AAC	10:15*
Meet Fred Theatr Arad Goch	10:15*
LOVNI Stiwdio/Studio, CCA/AAC	10:15*
Yr Hogyn Pren Ysgol/School	10:30
When the Moon Spun Round Theatr/Theatre, CCA/AAC	10:30*
The Diary of an Ugly Duckling Stiwdio Weston/ Weston Studio, Canolfan Mileniwm Cymru/ Wales Millennium Centre	10:30*
Rheolydd // Controller Bandstand	11:30
Yr Hogyn Pren CCA/AAC	12:30
When the Moon Spun Round Theatr/Theatre, CCA/AAC	13:15*
Meltdown Ysgol/School	13:15
LOVNI Stiwdio/Studio, CCA/AAC	13:15*
The Rematch CCA/AAC	13:30*
Yr Hogyn Pren Ysgol/School	14:00
Trafodaeth/Discussion <i>Cydweithio'n</i> <i>Rhyngwladol/International Collaboration</i> Theatr Arad Goch	14:45
Pwy Fyddi Di?/Who Will You Be? Yr Hwb – Fforwm Cymunedol Penparcau/ The Hub - Penparcau Community Forum	16:15
Rheolydd // Controller Bandstand	16:15
Rheolydd // Controller Bandstand	17:45
Invisible Lands Theatr Arad Goch	19:30*

DYDD IAU THURSDAY 14/3

SyrCAS CimerA CCA/AAC	~
QWERIN CCA/AAC	9:30
Invisible Lands Theatr Arad Goch	9:30*
Remarkable Rhythm Neuadd Fawr/Great Hall, CCA/AAC	10:15*
LOVNI Stiwdio/Studio, CCA/AAC	10:15*
Ble mae'r Dail yn Hedfan/ Where the Leaves Blow Ysgol/School	10:15
When the Moon Spun Round Theatr/Theatre, CCA/AAC	10:30*
Rheolydd // Controller Bandstand	10:45
Rheolydd // Controller Bandstand	12:15
LOVNI Stiwdio/Studio, CCA/AAC	13:15*
Invisible Lands Theatr Arad Goch	13:15*
Ble mae'r Dail yn Hedfan/ Where the Leaves Blow Ysgol/School	13:15
Remarkable Rhythm Neuadd Fawr/Great Hall, CCA/AAC	13:30*
QWERIN Llyfrgell Genedlaethol Cymru/ National Library of Wales	16:15
Rheolydd // Controller Bandstand	16:15
Ceffyl y Sêr Theatr Arad Goch	18:30*
When the Moon Spun Round Theatr/Theatre, CCA/AAC	19:30*



DYDD GWENER FRIDAY 15/3

We Touch, We Play, We Dance Stiwdio/Studio, CCA/AAC	10:15*
Rheolydd // Controller Bandstand	12:15
We Touch, We Play, We Dance Stiwdio/Studio, CCA/AAC	13:15*
The Diary of an Ugly Duckling Theatr/Theatre, CCA/AAC	13:15*
Breaking Illusions + Minlliw + Palmant / Pridd Theatr Arad Goch	14:45*
Rheolydd // Controller Bandstand	16:15
Trafodaeth/Discussion <i>laith mewn theatr i gynulleidfaoedd ifanc/Language in theatre for young audiences</i> Theatr Arad Goch	17:15
Rheolydd // Controller Bandstand	17:45
Meltdown Stiwdio Ffowndri/Foundry Studio	18:00*
The Diary of an Ugly Duckling Theatr/Theatre, CCA/AAC	19:30*
Gig Agor Drysau Theatr Arad Goch	19:30*

DYDD SADWRN SATURDAY 16/3

Ble mae'r Dail yn Hedfan/ Where the Leaves Blow Neuadd Fawr/Great Hall, CCA/AAC	10:15*
Rheolydd // Controller Bandstand	10:45
We Touch, We Play, We Dance Stiwdio/Studio, CCA/AAC	11:45*
Rheolydd // Controller Bandstand	12:15
Rheolydd // Controller Bandstand	13:45

* Angen tocyn.

Ticket required.

CCA/AAC Canolfan y Celfyddydau, Aberystwyth.
Aberystwyth Arts Centre.

Ysgol/School Perfformiad Ysgol, ddim ar agor i'r cyhoedd.
School performance, not open to the public.

NODDWYR SPONSORS



Funded by UK Government  Wedi ei ariannu gan Llywodraeth y DU

WEDI'I YRRU GAN POWERED BY
FFYNIANT LEVELLING
— BRO — — UP —



Cyngor Sir
CEREDIGION
County Council



Cyngor Celfyddydau Cymru
Arts Council of Wales



Noddir gan
Lywodraeth Cymru
Sponsored by
Welsh Government



CYNGOR TREF
ABERYSTWYTH
TOWN COUNCIL

PARTNERIAID PARTNERS



**CANOLFAN Y CELFYDDYDAU
ABERYSTWYTH ARTS CENTRE**



**LLYFRGELL GENEDLAETHOL CYMRU
THE NATIONAL LIBRARY OF WALES**

Theatr
Felinfach



**CANOLFAN MILENIWM CYMRU
WALES MILLENNIUM CENTRE**

**LLENYDDIAETH
AR DRAWS
FFINIAU
LITERATURE
ACROSS
FRONTIERS**

addo
Creative Arts Consultants



International Association of
Theatre & Performing Arts for
Children & Young People



Erasmus+

LLEOLIADAU VENUES

Theatr Arad Goch

Cyfeiriad: Stryd y Baddon, Aberystwyth SY23 2NN.

Hygyrchedd: Mynediad hygyrch i gadeiriau olwyn, manau eistedd hygyrch i gadeiriau olwyn, toiled hygyrch i gadeiriau olwyn, mae lifft ar gael. Mae lŵp sain ar gael yn y theatr. Mae croeso i gŵn tywys hyfforddedig a chŵn cymorth.

Parcio: Dim parcio ar y safle. Mae rhywfaint o lefydd parcio stryd ar gael yn y cyffiniau.

Address: Bath St, Aberystwyth SY23 2NN.

Accessibility: Wheelchair-accessible entrance, wheelchair-accessible seating, wheelchair-accessible toilet, a lift is available. Hearing loops are installed in the theatre. Trained guide dogs and assistance dogs welcome.

Parking: No on-site parking. Some street parking available in the vicinity.

Stiwidio Ffowndri Foundry Studio

Cyfeiriad: Adeilad Parry-Williams, Prifysgol Aberystwyth, Penglais, Aberystwyth SY23 3AJ.

Hygyrchedd: Maes parcio hygyrch i gadeiriau olwyn, mynedfa hygyrch i gadeiriau olwyn, manau eistedd hygyrch i gadeiriau olwyn, toiled hygyrch i gadeiriau olwyn. Mae croeso i gŵn tywys hyfforddedig a chŵn cymorth.

Parcio: Defnyddiwch faes parcio Canolfan y Celfyddydau, Aberystwyth.

Trafnidiaeth gyhoeddus: Bysus T2, 3, 301, 512, T28; Hyd: 6 munud o orsaf drenau a bysus Aberystwyth.

Address: Parry-Williams Building, Aberystwyth University, Penglais, Aberystwyth, SY23 3AJ.

Accessibility: Wheelchair-accessible car park, wheelchair-accessible entrance, wheelchair-accessible seating, wheelchair-accessible toilet. Trained guide dogs and assistance dogs welcome.

Parking: Please use the Aberystwyth Arts Centre car park.

Public transport: Buses T2, 3, 301, 512, T28; Duration: 6min from train and bus station.

Canolfan y Celfyddydau, Aberystwyth **Aberystwyth Arts Centre**

Cyfeiriad: Canolfan y Celfyddydau, Prifysgol Aberystwyth, Penglais, Aberystwyth SY23 3DE.

Hygyrchedd: Maes parcio hygyrch i gadeiriau olwyn, mynedfa hygyrch i gadeiriau olwyn, manau eistedd hygyrch i gadeiriau olwyn, toiled hygyrch i gadeiriau olwyn, mae lifft ar gael. Mae lŵp sain ar gael yn y Neuadd Fawr a'r Theatr. Mae croeso i gŵn tywys hyfforddedig a chŵn cymorth.

Parcio: Maes parcio ar y safle.

Trafnidiaeth gyhoeddus: Bysus T2, 3, 301, 512, T28; Hyd: 6 munud o orsaf drenau a bysus Aberystwyth.

Bwyd a diod: Caffi a bar.

Address: Aberystwyth Arts Centre, Aberystwyth University, Penglais, Aberystwyth SY23 3DE.

Accessibility: Wheelchair-accessible car park, wheelchair-accessible entrance, wheelchair-accessible seating, wheelchair-accessible toilet, a lift is available. Hearing loops are installed in the Great Hall and Theatre. Trained guide dogs and assistance dogs welcome.

Parking: On-site car park.

Public transport: Buses T2, 3, 301, 512, T28; Duration: 6min from train and bus station.

Food and drink: Café and bar.

Bandstand

Cyfeiriad: Marine Terrace, Aberystwyth SY23 2BY.

Hygyrchedd: Mynediad hygyrch i gadeiriau olwyn, toiled hygyrch i gadeiriau olwyn. Mae croeso i gŵn tywys hyfforddedig a chŵn cymorth.

Parcio: Dim parcio ar y safle. Mae rhywfaint o lefydd parcio stryd ar gael yn y cyffiniau.

Address: Marine Terrace, Aberystwyth SY23 2BY.

Accessibility: Wheelchair-accessible entrance, wheelchair-accessible toilet. Trained guide dogs and assistance dogs welcome.

Parking: No on-site parking. Some street parking available in the vicinity.

Yr Hwb - Fforwm Cymunedol Penparcau **The Hub - Penparcau Community Forum**

Cyfeiriad: Penparcau, Aberystwyth SY23 1RU.

Hygyrchedd: Mynedfa hygyrch i gadeiriau olwyn, manau eistedd hygyrch i gadeiriau olwyn, toiled hygyrch i gadeiriau olwyn. Mae croeso i gŵn tywys hyfforddedig a chŵn cymorth.

Parcio: Ddim ar y safle, ond maes parcio gerllaw, dros ffordd brysur.

Trafnidiaeth gyhoeddus: Safle bws gerllaw.

Address: Penparcau, Aberystwyth SY23 1RU.

Accessibility: Wheelchair-accessible entrance, wheelchair-accessible seating, wheelchair-accessible toilet. Trained guide dogs and assistance dogs welcome.

Parking: Not on site, but car park nearby, across a busy road.

Public transport: Bus stop near the building.

Theatr Felinfach

Cyfeiriad: Felinfach, Dyffryn Aeron SA48 8AF.

Hygyrchedd: Maes parcio hygyrch i gadeiriau olwyn, manau eistedd hygyrch i gadeiriau olwyn, mynedfa hygyrch i gadeiriau olwyn.

Parcio: Maes parcio ar y safle.

Trafnidiaeth gyhoeddus: Bws T1 o Gaerfyrddin ac Aberystwyth.

Address: Felinfach, Dyffryn Aeron SA48 8AF.

Accessibility: Wheelchair-accessible car park, wheelchair-accessible seating, wheelchair-accessible entrance.

Parking: On-site car park.

Public transport: T1 bus from Carmarthen and Aberystwyth.

Stiwidio Weston, Canolfan Mileniwm Cymru Weston Studio, Wales Millennium Centre

Cyfeiriad: Plas Bute, Caerdydd CF10 5AL.

Hygyrchedd: Mynediad hygyrch i gadeiriau olwyn, manau eistedd hygyrch i gadeiriau olwyn, toiled hygyrch i gadeiriau olwyn. Mae croeso i gŵn tywys hyfforddedig a chŵn cymorth. Ystafell dawel ar gael. Clustffonau i godi'r sain ar gael.

Parcio: Manau parcio i ymwelwyr anabl ar gael, ond mae angen archebu o flaen llaw. Dim parcio ar y safle fel arall. Mae nifer o feysydd parcio 24 awr y dydd ar gael yn y cyffiniau.

Trafnidiaeth gyhoeddus: Mae sawl gwasanaeth bws i ardal Bae Caerdydd o ganol y ddinas, ac mae arhosfan bws o flaen yr adeilad. Mae gwasanaeth trê'n rheolaidd i'r bae hefyd.

Bwyd a diod: Sawl caffi a bar yn yr adeilad.

Address: Bute Place, Cardiff CF10 5AL.

Accessibility: Wheelchair-accessible entrance, wheelchair-accessible seating, wheelchair-accessible toilet. Trained guide dogs and assistance dogs welcome. Quiet room available. Sound enhancement sets available.

Parking: Parking spaces for disabled visitors available, but must be booked in advance. No on-site parking otherwise. Several 24 hours a day car parks available in the vicinity.

Public transport: Several bus services to the Cardiff Bay area from the city centre and there is a bus stop in front of the building. Regular train service to the bay also.

Food and drink: Many cafes and bars in the building.



DATGANIAD HINSAWDD

CLIMATE STATEMENT

Mae Cwmni Theatr Arad Goch wedi ymrwymo i fynd i'r afael â'r argyfwng hinsawdd a mabwysiadu ffordd fwy gwyrdd o weithio. Rydym yn ymwybodol fod gennym le i wella eto ond rydym wedi ymdrechu i ddefnyddio deunyddiau cynaliadwy, rhai sydd wedi eu/sy'n bosib i'w hailgylchu wrth gynhyrchu'r ŵyl hon. Rydym yn cydnabod bod rhaglennu cwmnïau sydd angen hedfan yma i gymryd rhan yn mynd yn erbyn y datganiad hwn. Ar ôl dweud hyn, credwn fod cyfeillgarwch a chydweithio rhyngwladol yn bwysig a gall fod yn gatalydd ar gyfer newid cadarnhaol. Ar gyfer pob pum ymwelydd rhyngwladol i'r ŵyl, byddwn yn plannu coeden mewn ysgol leol, a fydd nid yn unig yn helpu gyda gwrthbwysu carbon, ond yn cynnwys pobl ifanc yn yr achos. Rydym yn gobeithio un diwrnod na fydd angen datganiad fel hwn, ond am y tro, gadewch i ni geisio gweithio gyda'n gilydd er lles ein dyfodol ni i gyd.

Cwmni Theatr Arad Goch is committed to tackling the climate emergency and adopting a greener working practice. We know that we have a way to go yet but we have tried to use sustainable and recycled/recyclable materials in producing this festival. We are aware that by programming acts which must fly to take part is somewhat contradictory. Having said this, we believe that international friendship and collaboration are important and can be a catalyst for positive and lasting change. For every five international visitors to the festival, we will plant a tree at a local school, which will not only help with carbon offsetting, but will involve young people in the cause. We hope one day that a statement like this will not be necessary, but for now, let's try and work together for the good of all our futures.



When the Moon Spun Round



The Diary of an Ugly Duckling



BLE MAE'R DAIL YN HEDFAN WHERE THE LEAVES BLOW

CWMNI THEATR ARAD GOCH (CYMRU/WALES)



Oedran: 3-8 a theuluoedd

Age: 3-8 and families

Hyd: 60 munud

Duration: 60 minutes

Cynhyrchiad hudolus a rhyngweithiol i blant bach a'u teuluoedd sy'n defnyddio gwrthrychau naturiol ein hamgylchedd i greu, adeiladu, chwarae, archwilio a chyfathrebu. Bydd y plant yn helpu'r cymeriadau i greu lle arbennig a diogel iddynt gysgodi, gan wynebu rhai o'r heriau ymarferol ag emosiynol sydd yn dod yn sgîl cydweithio a rhannu ag eraill.

Perfformiad dwyieithog fydd hwn, ond ychydig iawn o iaith a ddefnyddir. Mae'n addas ar gyfer siaradwyr Cymraeg newydd. Ceir hefyd elfennau o BSL yn y perfformiad.

A magical, interactive performance for young children and their families using natural objects from our environment to create, build, play, explore and communicate. The audience will assist the characters in creating a safe and special space, whilst facing some of the practical and emotional challenges which occur when working and sharing with others.

This will be a bilingual performance, but with very little language. It is suitable for new Welsh speakers. There are also elements of BSL in the performance.

Cyswllt/Contact: Nia Wyn Evans
post@aradgoch.org
www.aradgoch.cymru

BREAKING ILLUSIONS + MINLLIW + PALMANT / PRIDD

(CYMRU/WALES)

Oedran: 11+
Age: 11+

Hyd: Tua 30-40 munud yr un
Duration: Approximately 30-40
minutes each

Tri pherfformiad dawns yn archwilio ieuenctid ac hunaniaeth, wedi'u datblygu fel rhan o raglen 6X1 Cwmni Theatr Arad Goch. Bydd lluniaeth ysgafn ar gael rhwng y perfformiadau.

A triple bill of dance performances exploring youth and identity, all of which were developed as part of Cwmni Theatr Arad Goch's 6X1 programme. Light refreshments will be available between performances.

Breaking Illusions - Tommy Boost

Minlliw - Eluned Owen

Palmant / Pridd - Osian Meilir



Cysylltiadau/Contacts:

Tommy Boost
tommyboost1@gmail.com
www.tommyboost.co.uk



Eluned Owen
eluned.owen@outlook.com



Osian Meilir
osianmeilir@gmail.com
www.osianmeilir.com

CEFFYL Y SÊR

PHILOMUSICA ABERYSTWYTH (CYMRU/WALES)



Oedran: 7+
Age: 7+

Hyd: 25 munud
Duration: 25 minutes

Yn wybren ryfeddol sêr y nos, mae'r daith delynegol hon yn archwilio sut y gallwn ni gyd oresgyn ein hofnau. Bydd eich dychymyg yn gwibio wrth i chi ymuno â phlentyn a cheffyl ar antur drwy'r gofod, gan ddarganfod cytserau a hedfan drwy stormydd. Yng nghwmni cerddorfa 25 darn, bydd y perfformiad hwn hefyd yn cynnig cyflwyniad i seiniau gwahanol offerynnau cerdd.

Cerddoriaeth gan Gareth Glyn, geiriau gan Mererid Hopwood, animeiddio gan Rosie Miles a Rhys Bevan Jones.

Set against the backdrop of the wondrous starlit night sky, this lyrical journey explores how we can all conquer our fears. Let your imagination run wild as you join a child and a horse on an adventure through space, discovering constellations and overcoming extra-terrestrial storms. Featuring a 25-piece orchestra, this story also offers an introduction to the soundscape of different musical instruments.

Music by Gareth Glyn, words by Mererid Hopwood, animation by Rosie Miles and Rhys Bevan Jones.

Cyswllt/Contact: Iwan Davies
iwd7@aber.ac.uk
www.philomusica.cymru

Bydd dehonglydd BSL yn bresennol yn y perfformiad hwn.
A BSL interpreter will be present at this performance.

GIG AGOR DRYSAU

TREFNWDYD GAN/ORGANISED BY
AELWYD TREFECHAN

Tara Bandito

Yn ferch i'r reslar El Bandito, mae perfformio yng ngwaed Tara. Fe'i disgrifiwyd fel 'formidable live artist' gan DJ Bethan Elfyn ar BBC Radio Wales, a fis Tachwedd 2023, teithiodd i chwarae yng nghŵyl LUCfest, Taiwan. Gyda'i thiwns synthpop unigryw, mae Tara a'i band yn barod i droi Theatr Arad Goch yn barti lliwgar!

As the daughter of wrestler El Bandito, performing is in Tara's blood. She was described as a 'formidable live artist' by DJ Bethan Elfyn on BBC Radio Wales, and in November 2023, she travelled to play at LUCfest, Taiwan. With her unique synthpop tunes, Tara and her band are ready to bring the party to Theatr Arad Goch!

Dadleoli

Ffurfiodd y band o ganlyniad i weithdai cyfansoddi Menter Caerdydd dan arweinyddiaeth Mei Gwynedd. Yn ddiweddar enillon nhw ddau gategori yng Ngwobrau'r Selar 2024, sef Band neu Artist Newydd Gorau, a Record Fer Orau am eu EP cyntaf, *Diwrnodau Haf*.

The band from Cardiff formed as a result of Menter Caerdydd composing workshops under the leadership of Mei Gwynedd. They recently won two categories at the Gwobrau'r Selar 2024 awards – Best New Band or Artist, and Best EP for their debut, *Diwrnodau Haf*.



INVISIBLE LANDS

LIVSMEDLET COMPANY (Y FFINDIR/FINLAND)



Oedran: 12+
Age: 12+

Hyd: 50 munud
Duration: 50 minutes

Heidiau o bobl yn cerdded ar hyd cefn o fryn. Teulu ar goll mewn mynydd o bengliniau, gydag hofrennydd bocs matsys yn eu hela. Cwch bychan yn siglo ar fol wedi'i baentio'n las. Yn y cynhyrchiad cyfareddol a phwerus hwn, mae cyrff yn troi'n dirweddau ar gyfer alltudion wrth i'r coreograffydd o Sweden Sandrina Lindgren a'r pypedwr o Israel Ishmael Falke gwestiynu'r modd y mae'r cyfryngau'n adrodd ar ymfudwyr.

Flocks of people walking on the hill of a bent back. A family lost in a mountain of knees, hunted down by a helicopter the size of a matchbox. A makeshift boat, swayed on a blue painted belly. In this spellbinding and intimate production, bodies become landscapes for figures in exile as Swedish choreographer Sandrina Lindgren and Israeli puppeteer Ishmael Falke question the media's treatment of the migrants' drama.

Cyswllt/Contact: Alain Baczynsky aka Le Minuteman
ab@leminuteman.com
www.ishmaelfalke.com
www.sandrinalindgren.me

LOVNI

COMPAGNIE DE LA CASQUETTE
(GWLAD BELG/BELGIUM)



Oedran: 3-9
Age: 3-9

Hyd: 60 munud
Duration: 60 minutes

Dilynwch y ddau gaptan i'w llong. Byddan nhw'n gwneud yn siŵr eich bod chi'n gyfforddus. Byddan nhw'n gyrru fel meistri. Trwy gydol y daith, caiff tirweddau eu creu drwy sain a lliwiau. Gallwch hwylio i ble bynnag y dymunwch. I ble y byddwch chi'n mynd? Fyny fry, i gornel bell o'r bydysawd? Yn ddwfn i grombil y Ddaear? Mae LOVNI yn brofiad rhyngweithiol, agos-atoch, sensitif a cherddorol. Dewch da chi, dewiswch eich taith.

Two captains take you to their ship. They make sure you're comfortable. They drive like champions. Throughout the journey, landscapes are created through sounds and colours. You can sail to wherever you want. Where will you go? High up, a thousand moons into the universe? Deep into the core of the Earth? LOVNI is an immersive, intimate, sensitive, and musical experience. Go ahead, choose your journey.

Cyswllt/Contact: Yannick Boudeau
yannick@casquette.be
www.casquette.be

MEET FRED

HIJINX MEWN CYDWEITHREDIAD Â BLIND SUMMIT
HIJINX IN ASSOCIATION WITH BLIND SUMMIT
(CYMRU/WALES)



Oedran: 14+
Age: 14+

Hyd: 80 munud
Duration: 80 minutes

Dewch i gwrdd â Fred, y pyped brethyn dwy droedfedd o daldra sy'n brwydro yn erbyn rhagfarn bob dydd. Mae e eisiau bod yn foi 'arferol', yn rhan o'r byd go iawn, eisiau swydd a chwrdd â merch, ond wrth iddo wynebu colli ei PLA (Puppetry Living Allowance), mae bywyd Fred yn dechrau mynd y tu hwnt i reolaeth. Dyma gynhyrchiad a brofodd lwyddiant ysgubol yn yr Edinburgh Festival Fringe 2016, ac mae wedi teithio'n helaeth ers hynny. Mae'r perfformiad yn cynnwys iaith gref a noethni pypedau.

Meet Fred, the two foot tall cloth puppet that fights prejudice every day. He just wants to be a regular guy, part of the real world, to get a job and meet a girl, but when threatened with losing his PLA (Puppetry Living Allowance), Fred's life begins to spiral out of his control. This Edinburgh Festival Fringe 2016 sell out hit contains strong language and puppet nudity.

Cyswllt/Contact: Ellis Wrightbrook
ellis.wrightbrook@hijinx.org.uk
www.hijinx.org.uk

MELTDOWN

ZEAL THEATRE (AWSTRALIA/AUSTRALIA)

Oedran: 13-18

Age: 13-18

Hyd: 65 munud

Duration: 65 minutes

Mae Zane yn 15 mlwydd oed ac mae aelodau o'i deulu 'normal' yn cael eu heffeithio'n fawr gan gyflyrau iechyd meddwl; chwaer ym mlwyddyn 12 wedi'i pharlysu gan ofn, mam dan straen, chwaer fach yn gaeth i gyfryngau cymdeithasol, brawd bach sy'n methu stopio llefain, a thad folcanig sydd ar fin ffrwydro. *Meltdown* yw hanner canfed cynhyrchiad gwreiddiol Zeal Theatre o Awstralia, ac unwaith eto mae'n cyfuno actio aml-gymeriad deinamig, cerddoriaeth fyw a chomedi.

Zane is 15 and his 'normal' family is rife with mental health issues; a sister in year 12 who is paralysed by fear, a stressed-out mum, a little sister hooked on social media, a baby brother who can't stop crying, and a volcanic dad about to explode. *Meltdown* is Zeal Theatre's 50th original production, and again blends dynamic multi-character acting, live music and comedy.

Cyswllt/Contact: Stefo Nantsou/Tom Lycos
zealtheatre@gmail.com
www.zealtheatre.com.au



OWL AT HOME

THEATR IOLO (CYMRU/WALES)



Oedran: 5-11 a theuluoedd

Age: 5-11 and families

Hyd: 45 munud

Duration: 45 minutes

Mae 'Owl' yn byw mewn tŷ bach clyd mewn boncyff gwag yn y goedwig. Ond gan fod 'Owl' yn unig druan, mae'n canu iddo'i hun ac yn chwilio am ffyrdd i ladd amser. Mae'n pendroni llawer am bethau. Beth fyddai'n digwydd pe bai'n gwahodd y gaeaf i mewn i'w dŷ? Ydi 'Owl' yn gallu bod mewn dau le ar yr un pryd? Wrth i'w ddychymyg garlamu, mae pethau o'i gwmpas yn dechrau dod yn fyw. Mae'n dod o hyd i ffrind yn sydyn, ffrind sy'n barod i'w ddilyn i ben draw'r byd... os yw 'Owl' yn dymuno hynny neu beidio!

Wedi'i seilio ar y llyfr â darluniau i blant gan Arnold Lobel.
Addaswyd i'r llwyfan gan Rina Vergano + Theatr Iolo.

Owl lives alone in a cosy little home in a hollow tree in the woods. With no one to talk to, Owl sings to himself and looks for ways to pass the time. He wonders about things a lot. What will happen if he invites winter into his home? And can he be in two places at once? As his imagination runs away with him, ordinary objects begin to take on a life of their own and Owl finds an unexpected friend who's willing to follow him to the ends of the earth... whether he likes it or not!

Based on the illustrated children's book by Arnold Lobel. Adapted for the stage by Rina Vergano + Theatr Iolo.

Cyswllt/Contact: Michelle Perez
michelle@theatriolo.com
www.theatriolo.com

PWY FYDDI DI? WHO WILL YOU BE?

PRIFYSGOL DE CYMRU/
UNIVERSITY OF SOUTH WALES
(CYMRU/WALES)

Oedran: 13+
Age: 13+

Hyd: 60 munud
Duration: 60 minutes

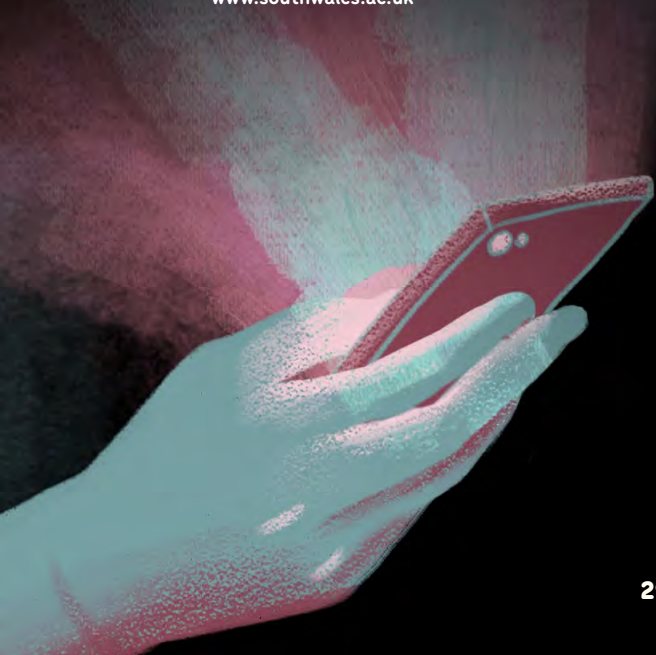
Cynhyrchiad amlgyfrwng sy'n archwilio sut mae hunaniaeth yn cael ei lywio gan ddylanwadwyr a thueddiadau ar y cyfryngau cymdeithasol. Ydyn ni'n tanysgrifio i bethau sy'n gadarnhaol neu sy'n niweidiol?

Crëwyd gan fyfyrwyr Perfformio a'r Cyfryngau o Brifysgol De Cymru.

A multimedia performance exploring how we navigate our identities in relation to social media influencers and trends. Are we subscribing ourselves to help or harm?

This production has been created by Performance and Media students from the University of South Wales.

Cyswllt/Contact: Matthew Gough
matthew.gough@southwales.ac.uk
www.southwales.ac.uk



QWERIN

OSIAN MEILIR (CYMRU/WALES)



Addas ar gyfer bob oedran

Suitable for all ages

Hyd: 35 munud

Duration: 35 minutes

Perfformiad dawnys gyfoes sy'n ddathliad lliwgar o ddiwylliant, hunaniaeth a chymuned. Wedi'i ysbrydoli gan wead a phatrymau'r ddawns werin Gymreig ynghyd ag egni heintus bywyd nos Cwiar, mae *QWERIN* yn cynnig sylwebaeth ar y cysyniad o 'Queerness' a Chymreictod. Perfformir i sgôr sain wreiddiol gan rai o gerddorion amlycaf Cymru â gwisgoedd trawiadol sy'n rhoi blas newydd i'r wisg draddodiadol Gymreig. Mae *QWERIN* yn wledd i'r glust a'r llygad.

A joyful contemporary dance performance which celebrates culture, identity and community. Inspired by the interweaving and flowing patterns of traditional Welsh folk-dancing combined with the pulsating energy of Queer nightlife, *QWERIN* reflects on notions of Queerness and Welshness. Set to an original soundtrack created by some of Wales' most renowned musicians and showcasing costumes that give a new edge to the Welsh traditional dress, *QWERIN* truly is a feast for the senses.

Cyswllt/Contact: Osian Meilir
osianmeilir@gmail.com
www.osianmeilir.com

REMARKABLE RHYTHM

KRYSTAL S. LOWE MEWN CYDWEITHREDIAD Â
THEATR IOLO

KRYSTAL S. LOWE IN ASSOCIATION WITH THEATR
IOLO (CYMRU/WALES)



Oedran: 7+ a theuluoedd
Age: 7+ and families

Hyd: 60 munud
Duration: 60 minutes

Perfformiad dawns hyfryd i blant a theuluoedd. Pan fydd Rhythm a Glas yn cyfarfod ym mharc Belle Vue, mae ganddyn nhw bum niwrnod yr hanner tymor i weld a yw eu cyfeillgarwch yn werth ei gadw, cyn iddyn nhw fynd yn ôl i'w hysgolion gwahanol. Trwy gerddoriaeth, symudiad, a hap a damwain, mae'r ddau berson ifanc hyn yn profi'r anhawster a'r llawenydd o gysylltu â'r rhai sy'n wahanol iddyn nhw eu hunain. Gyda disgrifiadau sain integredig gan y ddau berfformiwr, mae'r cynhyrchiad hwn yn hygyrch i gynulleidfaoedd sy'n ddall neu'n rhannol ddall ac mae'r stori gorfforol yn glir yn weledol felly mae'n galluogi cynulleidfaoedd Byddar i brofi pob rhan o'r sioe yn llawn hefyd.

A delightful dance performance for children and families. When Rhythm and Glas meet at Belle Vue Park, they have the five days of half-term to see if their friendship is worth keeping, before they go back to their separate schools. Through music, movement, and mishap, these two young people experience the difficulty and joy in connecting with those unlike themselves. With integrated audio description by the two dancers, this production is accessible to audiences who are blind or partially sighted and the physical storyline is visually clear so allows Deaf audiences the ability to also experience every show fully.

Cyswllt/Contact: Krystal Lowe
krystalstlowe.artist@gmail.com
www.krystallowe.com

RHEOLYDD // CONTROLLER

JASON&BECKY (CYMRU/WALES)



Oedran: 11+
Age: 11+

Hyd: Hyd at 45 munud am gêm lawn
Duration: Up to 45 minutes for a full game

Mae'r cynhyrchiad rhyngweithiol hwn yn herio naratif confensiynol gemau cyfrifiadurol drwy gyfuno'r byd digidol a'r byd ffisegol i greu profiad unigryw.

Mae taith wersylla dau ffrind yn cymryd tro annisgwyl pan fydd endid 'drwg' yn tarfu ar gydbwysedd naturiol y goedwig... Cwrdd ag ystlumod, dadgodio posau, a chasglu crisialau. Eich dewisiadau chi fydd yn rheoli'r stori!

Cydiwch yn eich rheolydd gêm fideo! Mae pob gêm yn para hyd at 45 munud os caiff ei chwarae yn ei chyfanrwydd, ond gallwch chi alw heibio am gyfnod byrrach. Nid profiad theatr yn unig mohono; bydd tynged y cymeriadau yn eich dwylo chi! Mae *Rheolydd // Controller* yn annog chwaraewyr i hunan fyfyrto ar ganlyniadau gweithredoedd, yn y byd rhithwir a bywyd go iawn.

Gwaith newydd sbon a gomisiynwyd ar gyfer Gŵyl Agor Drysau 2024 gan Gwmni Theatr Arad Goch mewn cydweithrediad ag Addo.

Cyswllt/Contact: Jason&Becky
hello.jasonandbecky@gmail.com
www.jasonandbecky.co.uk

Step into the captivating world of *Rheolydd // Controller* by artists Jason&Becky. This immersive theatre production challenges the conventional narrative of gaming, blending physical and digital realms in a unique interactive experience. A camping trip for two friends takes an unexpected turn when an 'evil' entity disrupts the natural balance of the forest... Encounter bats, decode puzzles, and collect crystals, all while shaping the storyline through collective choices on a quest to restore equilibrium!

Grab your video-game controller and immerse yourself in the unfolding narrative, skillfully navigating challenges with the enthusiastic support of fellow audience members cheering you on. Each game is up to 45 minutes in duration if played through in its entirety, although you may pop in for a shorter time. It's not just a theatre experience; it's a gaming adventure where you are the controller of destiny!

Rheolydd // Controller encourages self-reflection on the consequences of actions, both in the virtual world and real life. Explore the intersections of gaming and human responsibility, where your choices dictate the unfolding drama, and you become a vital part of the immersive adventure. Blur the lines between spectator and actor in this thought-provoking, entertaining, and challenging theatre experience!

A brand new work commissioned for the festival by Cwmni Theatr Arad Goch in collaboration with Addo.



SYRCAS CIMERA

(CYMRU/WALES)

Addas ar gyfer bob oedran

Suitable for all ages

Bydd Syrcas Cimeria yn diddanu cynulleidfaoedd yn ardaloedd cyhoeddus Canolfan y Celfyddydau, Aberystwyth. O stiltio i jyglo, byddwch yn siŵr o gael eich hudo. Pwy a wŷr, efallai y bydd cyfle i chi gael tro eich hun hefyd!

Syrcas Cimeria will be entertaining the crowds in the public spaces of Aberystwyth Arts Centre. From stilts to juggling, you're sure to be mesmerised, and who knows, you might get the chance to join in yourself!

Cyswllt/Contact: Iago Morgan Jones
enquiries.cimera@outlook.com
www.cimera.co.uk



THE DIARY OF AN UGLY DUCKLING

FACTORY COMPAGNIA TRANSADRIATICA
(YR EIDAL/ITALY)



Oedran: 6+ a theuluoedd
Age: 6+ and families

Hyd: 50 munud
Duration: 50 minutes

Mae *The Diary of an Ugly Duckling* yn cyfuno theatr a dawns yn yr addasiad newydd hwn o stori dylwyth teg enwog Hans Christian Andersen. Gan archwilio amrywiaeth, hunaniaeth, a'r her o integreiddio, mae'r stori yn dilyn alarch bach, y credir i fod yn hwyaden fach, ar ei thaith drwy fywyd, wrth iddi geisio darganfod ei hun a'i lle yn y byd.

The Diary of an Ugly Duckling combines theatre and dance in this new adaptation of the classic Hans Christian Andersen fairy tale. Exploring diversity, identity and integration, the narrative follows a small swan, believed to be a duckling, crossing through various stages of life, as she discovers herself and her place in the world.

Cyswllt/Contact: Francesca Vetrano
francesca@compagniafactory.com
www.compagniafactory.com

THE REMATCH

TEATRODISTINTO (YR EIDAL/ITALY)

Oedran: 5+ a theuluoedd
Age: 5+ and families

Hyd: 60 munud
Duration: 60 minutes

Mae dau chwaraewr yn camu i'r cae. Dau sy'n gwrtais a pharchus yn eu bywydau bob dydd. Ond ar y cae chwarae, mae'r ysfa i ennill a threchgu'r llall yn dod yn amlwg. Dyma theatr gorfforol chwaraeus a dramatig sy'n archwilio'r teimladau ac emosiynau sydd ynghlwm wrth ennill a cholli, a'r elfen ddydol y tu hwnt i gystadleuaeth.

Two players take to the pitch. Both are polite and respectful in their daily lives, but on the playing field, the drive to win and defeat the other becomes evident.

A playful and dramatic piece of physical theatre that explores the feelings and emotions involved in winning and losing, and the human relationships behind competition.

Cyswllt/Contact: Daniel Gol
teatrodistinto@gmail.com
www.teatrodistinto.it



WE TOUCH, WE PLAY, WE DANCE

SECOND HAND DANCE (LLOEGR/ENGLAND)



Oedran: 0-3

Age: 0-3

Hyd: 45 munud

Duration: 45 minutes

Bydd pedwar dawnsiwr yn gwau o gwmpas y gofod, gan wahodd babanod a phlant i ymuno â nhw mewn perfformiad cynnes a chwareus. Gyda cherddoriaeth fyw gan DJ, bydd y dawnsiwr yn ymateb i'r plant, gan eu harwain drwy gyfres o gyfnewidiadau a chyfarfyddiadau, gyda phawen lawen, cwtsh a bwgi. Mae *We Touch, We Play, We Dance* yn berfformiad hwyliog i blant dan 3 oed. Mae'n sioe sy'n llawn syrpreisys a llawenydd lle gallwch chi a'ch plentyn ymuno, neu wrando a gwylio - y naill ffordd neu'r llall, byddwch chi'n siŵr o fwynhau mas draw.

Four dancers weave around the space, inviting babies and children to join them in a warm-hearted and playful performance. With music mixed live by a DJ, the dancers respond to the children, guiding them through a series of exchanges and encounters, with high fives, hugs and dancing. *We Touch, We Play, We Dance* is a mesmerising, engaging and fun performance for children under 3. It's a show filled with surprises and joys where you and your child can listen and watch or let loose and join in, either way, you'll have a wonderful time.

Cyswllt/Contact: Emily Jameson

emily@secondhanddance.co.uk

www.secondhanddance.co.uk

WHEN THE MOON SPUN ROUND

CEOL CONNECTED + FIDGET FEET AERIAL DANCE
(IWERDDON/IRELAND)



Oedran: 6+ a theuluoedd
Age: 6+ and families

Hyd: 50 munud
Duration: 50 minutes

Ymunwch â ni ar daith hudol lle mae artistiaid awyr yn dawnsio fel tonnau'r môr, lle mae ffidlwr yn hedfan fry, a lle mae'r nos a'r dydd a'r gwyl yn arnofio ac yn plymio. A pheidiwch ag anghofio hen wraig ddirgel yr afon sy'n defnyddio ei phlu i archwilio'r hyn sydd y tu ôl i'r lleuad pan y bydd yn troi o gwmpas! Mae *When the Moon Spun Round* yn gynhyrchiad epig sydd wedi'i ysbrydoli gan gerddi a straeon W.B Yeats, ac sy'n dwyn ynghyd arbenigeddau Ceol Connected a Fidget Feet – dau o gwmnïau cynhyrchu mwyaf blaenllaw Iwerddon.

Come on an imaginative journey where aerial artists dance like the waves of the sea, where a fiddler soars high, and where the night, light and half-light suspend, float and fall. And let's not forget the mysterious antique lady of the river whose feathers explore what lies behind the moon once it spins round! *When the Moon Spun Round* is an epic and visually spellbinding production inspired by the poetry and stories of W.B Yeats, and brings together the joyous worlds of Ceol Connected and Fidget Feet – two of Ireland's leading production companies.

Cysylltiadau/Contacts:

Thomas Johnston
thomas@ceolconnected.ie
www.ceolconnected.ie

Chantal McCormick
chantal@fidgetfeet.com
www.fidgetfeet.com

YR HOGYN PREN

THEATR GENEDLAETHOL CYMRU
(CYMRU/WALES)

Addas ar gyfer bob oedran
Suitable for all ages

Hyd: 20 munud
Duration: 20 minutes

Mae bywyd yn gallu bod yn anodd pan ti wedi dy greu o froc môr. Wrth i'r Hogyn Pren hudolus chwilio am ei galon, mae mam yn darganfod darn o gwch wedi'i olchi i'r lan. A fydd eu cyfarfod annisgwyl yn dod â gobaith newydd neu a fydd atgofion o'r gorffennol yn ei llethu?

Ar ôl swyno cynulleidfaoedd yn Eisteddfod Genedlaethol Cymru 2023, mae'r antur hudolus yma i'r teulu i gyd yn cyfuno pypedwaith cywrain, stori afaelgar a cherddoriaeth arallfydol. Wedi'i greu gan Owain Gwynn (*War Horse*, *Life of Pi*), mae Theatr Genedlaethol Cymru (enwebwyd yng Ngwobrau *The Stage* 2024) yn cyflwyno stori ysbrydoledig am bŵer cysylltiad annisgwyl.

Life can be tough when you're made of driftwood. As the magical wooden boy searches for his heart, a mother finds a piece of boat washed up on the shore. Will their unexpected encounter bring fresh hope or will memories from the past overwhelm her?

After captivating audiences at the 2023 National Eisteddfod, this magical adventure for the whole family combines intricate puppetry, a gripping story and ethereal music. Created by Owain Gwynn (*War Horse*, *Life of Pi*), the Welsh-language national theatre (nominated for *The Stage Awards* 2024) presents an inspiring story about the power of unexpected connection.

Cyswllt/Contact: Rhian Davies
rhian.davies@theatr.com
www.theatr.cymru



TRAFODAETHAU DISCUSSIONS

Bydd cyfieithydd ar y pryd a dehonglydd BSL yn bresennol yn y trafodaethau.

A Welsh to English simultaneous translator and a BSL interpreter will be present at the discussions.

Dyfeisio: Ble i ddechrau?

Devising: Where to start?

Cadeirydd/Chair - Matthew Gough

Sgwrs anffurfiol fydd yn gyfle i artistiaid drafod y grefft o ddyfeisio. Ble i ddechrau arni? Pa ymarferion neu sbardunau mae'n bosib eu defnyddio i greu cynnwys? Beth yw'r camau nesaf wedyn, a sut gellid mowldio'r cynnwys i greu darn o theatr mwy 'gorffenedig'? Pa ran y mae 'cynulleidfa' yn ei chwarae yn y broses, ac yw hyn yn amrywio yn dibynnu ar pwy yw'r targed? Bydd y sgwrs yn gyfle i glywed a rhannu profiadau mewn gofod hwyliog a chefnogol.

An informal discussion for artists to discuss the art of devising. Where to start? What exercises or prompts can be used to create content? What are the next steps, and how can content be moulded to create a more 'finished' piece of theatre? What part does 'audience' play in the process, and does it differ depending on who you're targeting? The conversation will be an opportunity to hear and share experiences in a relaxed and safe space.



Cydweithio'n Rhyngwladol International Collaboration

Cadeirydd/Chair - Branwen Davies

Beth yw'r cyfleoedd sydd ar gael i gydweithio'n rhyngwladol? Sut mae dilyn y sgysiau cychwynnol gyda gweithredoedd? Beth yw'r heriau sydd yn ein wynebu wrth greu cysylltiadau rhyngwladol? Sut y mae'r argyfwng hinsawdd yn effeithio ar hyn oll?

What are the opportunities available for international collaboration? How do we follow up the initial conversations with actions? What are the challenges we face in creating international relations? How does the climate emergency affect all of this?

Iaith mewn theatr i gynulleidfaoedd ifanc Language in theatre for young audiences

Cadeirydd/Chair - Mari Rhian Owen

Beth yw'r cwestiynau sy'n codi wrth feddwl am iaith mewn theatr i gynulleidfaoedd ifanc? Yw hi'n ddyletswydd arnom ni i gyflwyno iaith er mwyn hybu ymdeimlad o berthyn a hunaniaeth, a chefnogi caffael iaith? Sut gellid defnyddio arwyddo, capsïynau a disgrifiadau sain i wneud gwaith yn fwy cynhwysol a chyfoethog? A all iaith lafar droi'n rhwystr wrth geisio ehangu ein cynulleidfaoedd? Sgwrs panel fydd hwn gyda chyfle i'r gynulleidfa hefyd i ymuno drwy holi cwestiynau a rhannu eu barn a'u profiadau.

What questions arise when thinking about language in theatre for young audiences? Should we feel a duty to include language as a way of promoting a sense of belonging and identity, and to support language acquisition? How can signing, captioning and audio describing enrich our work and increase inclusivity? Can spoken language become a barrier when trying to expand our audiences? This will be a panel discussion with an opportunity for audience members to participate by asking questions and sharing views and experiences.

Ble mae'r Dail yn Hedfan
Where the Leaves Blow



Invisible Lands



We Touch, We Play, We Dance



QWERIN



Meet Fred





**Perfformiadau sydd angen tocyn: £5 y perfformiad
i blant, pobl ifanc a myfyrwyr. £8-£12 i oedolion.**

Ticketed performances: £5 per performance
for children, young people and students. £8-£12 for adults.

**WWW.AGORDRYSAU.CYMRU
WWW.OPENINGDOORS.WALES**